	SPECIFICATION	Model No.	CRT-591
		Date	2010/3/2
	Card Issuing Machine	Ver.	1.0
		Page	1/9

CRT-591

Card Issuing Machine

VER 1.0

PRODUCT SPECIFICATION




CREATOR (CHINA) TECH CO., LTD.

·Add: 2F, M-10 Building, Center Area, Hi-tech Industrial Park, Shenzhen, China


·TEL:+86 755 26710691 FAX:+86 755 26710105

·Http://www.china-creator.com

	SPECIFICATION	Model No.	CRT-591
		Date	2010/3/2
	Card Issuing Machine	Ver.	1.0
		Page	2/9


Revision Log

Version	Revision Time	Content
1.0	2010.2.24	First Release

	SPECIFICATION	Model No.	CRT-591
		Date	2010/3/2
	Card Issuing Machine	Ver.	1.0
		Page	3/9

Contents


1.OVERVIEW.....	4
2. Product Module Number Specification	5
3. Structure and Dimension Drawings	6
4. Card Movement Sketch Map	7
5. General Specification.....	8
6. CRT-591 Design Specification	9
6.1 Card Thickness Adjustment	9

	SPECIFICATION	Model No.	CRT-591
		Date	2010/3/2
	Card Issuing Machine	Ver.	1.0
		Page	4/9

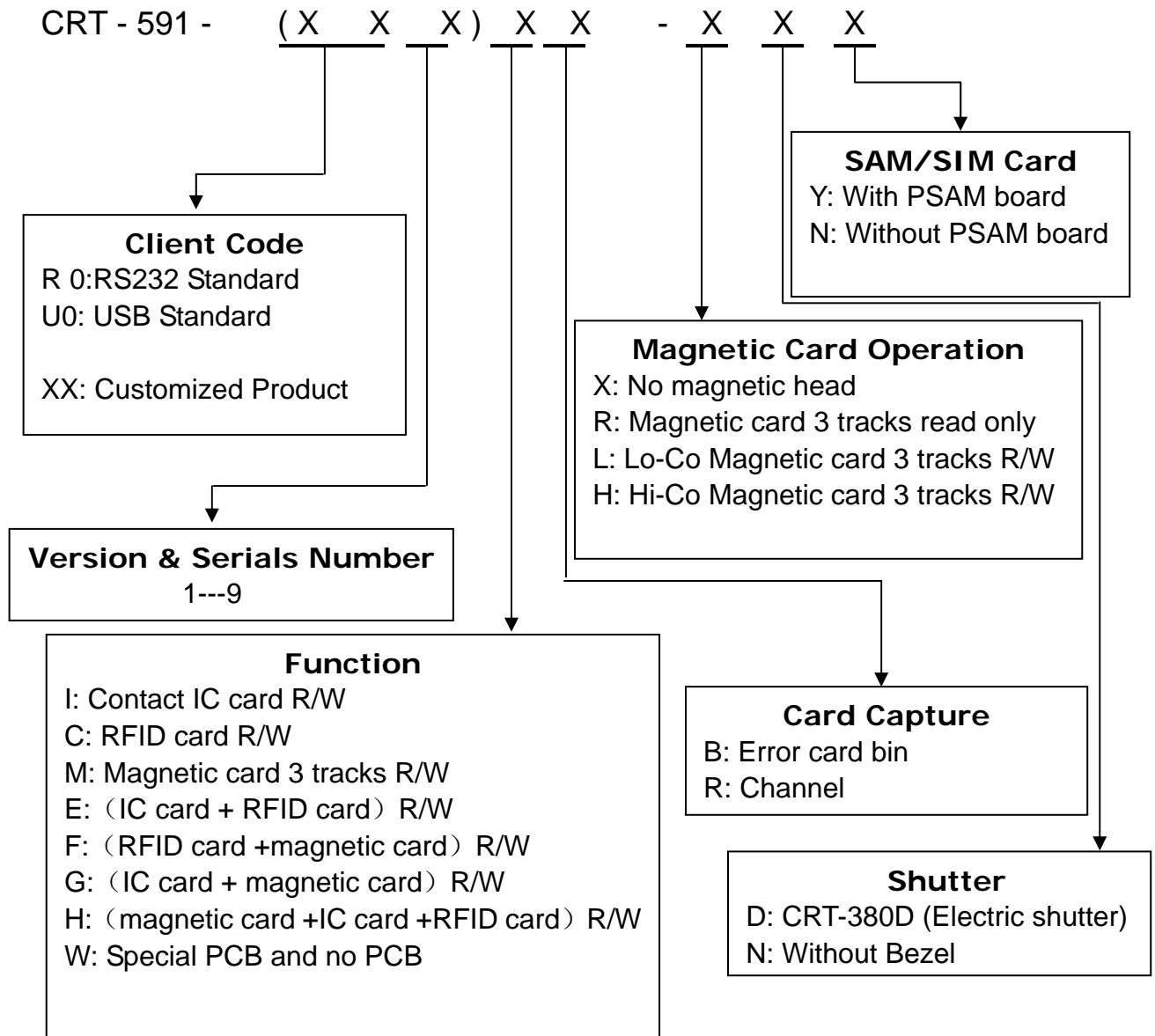
1. OVERVIEW

CRT-591 is card issuing machine with IC/ RFID/ Magnetic card read/ write functions. CRT-591 has the following features:

- 3 in 1: Support IC/ RFID/ Magnetic card read/ write , the function could be combine simultaneously and respectively.
- Extendibility: Third-party RFID or IC module is available to equip.
- Removable stacker: Removable stacker is available to be load on CRT-591. The removable stacker can be locked on the machine to improve the system security.
- Concaved card thickness adjustment: Easy to adjust card thickness setting and improve the stability of issuing.
- Customizability: Fulfill customer's requirement to tailor our machine
- Multi-unit communication: Support Max. 16pcs via RS232 interface.
- Support WOSA mechanism and provide SP and DLL
- Support IAP download
- Compact size and low cost

	SPECIFICATION	Model No.	CRT-591
		Date	2010/3/2
	Card Issuing Machine	Ver.	1.0
		Page	5/9

2. Product Module Number Specification



NOTE: Type of CRT-591 series removable stacker shows as below:

Long stacker with lock:	CRT-500-X5L	(Capability: 500pcs)
Long stacker without lock:	CRT-500- X5N	(Capability: 500pcs)
Short stacker with lock:	CRT-500- X2L	(Capability: 240pcs)
Short stacker without lock:	CRT-500- X2N	(Capability: 240pcs)

The metal stopper on the rear side of CRT-591 should be removed when removable stacker is fit out.



SPECIFICATION

Card Issuing Machine

Model No.

CRT-591

Date

2010/3/2

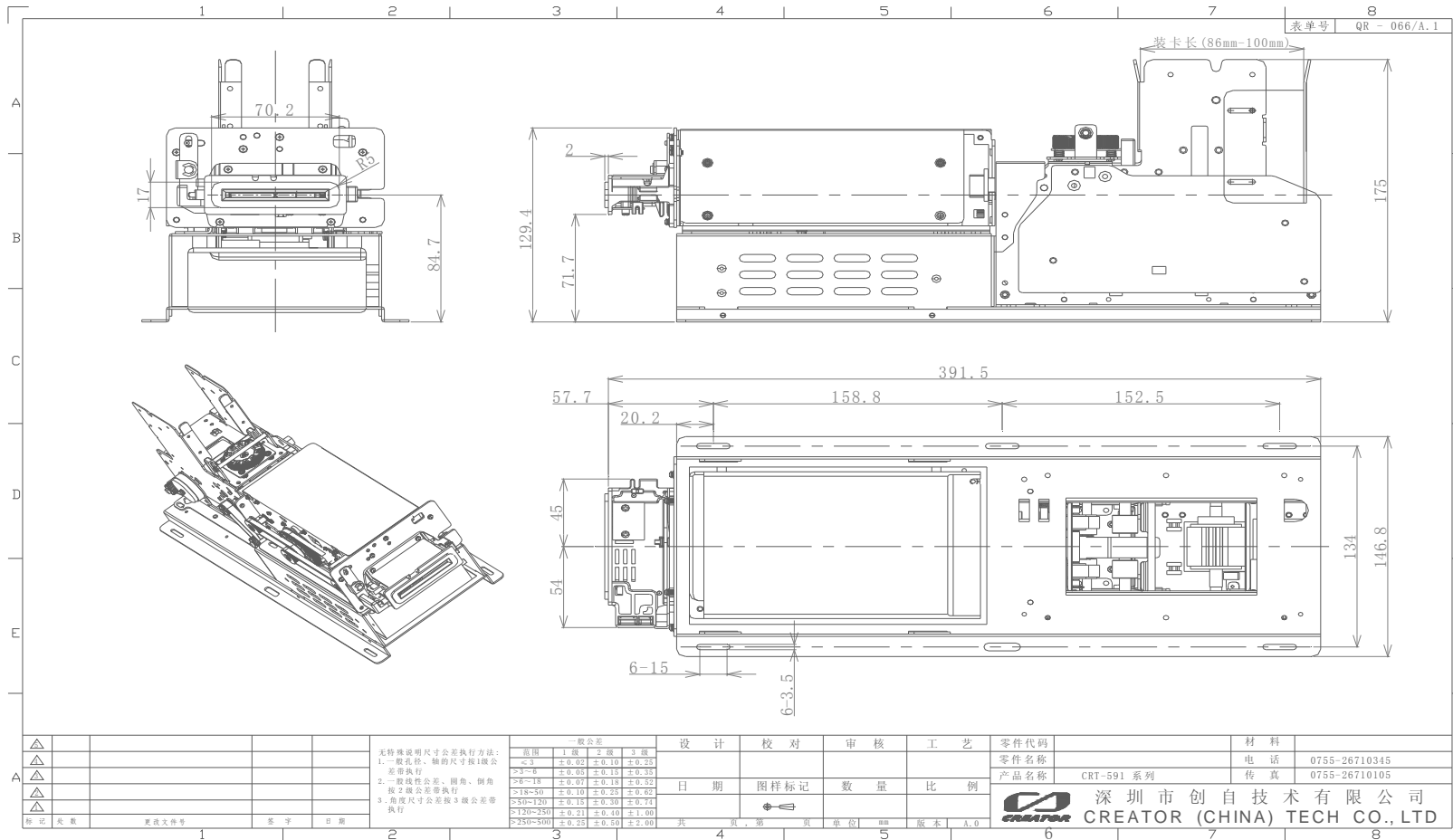
Ver.


1.0

Page

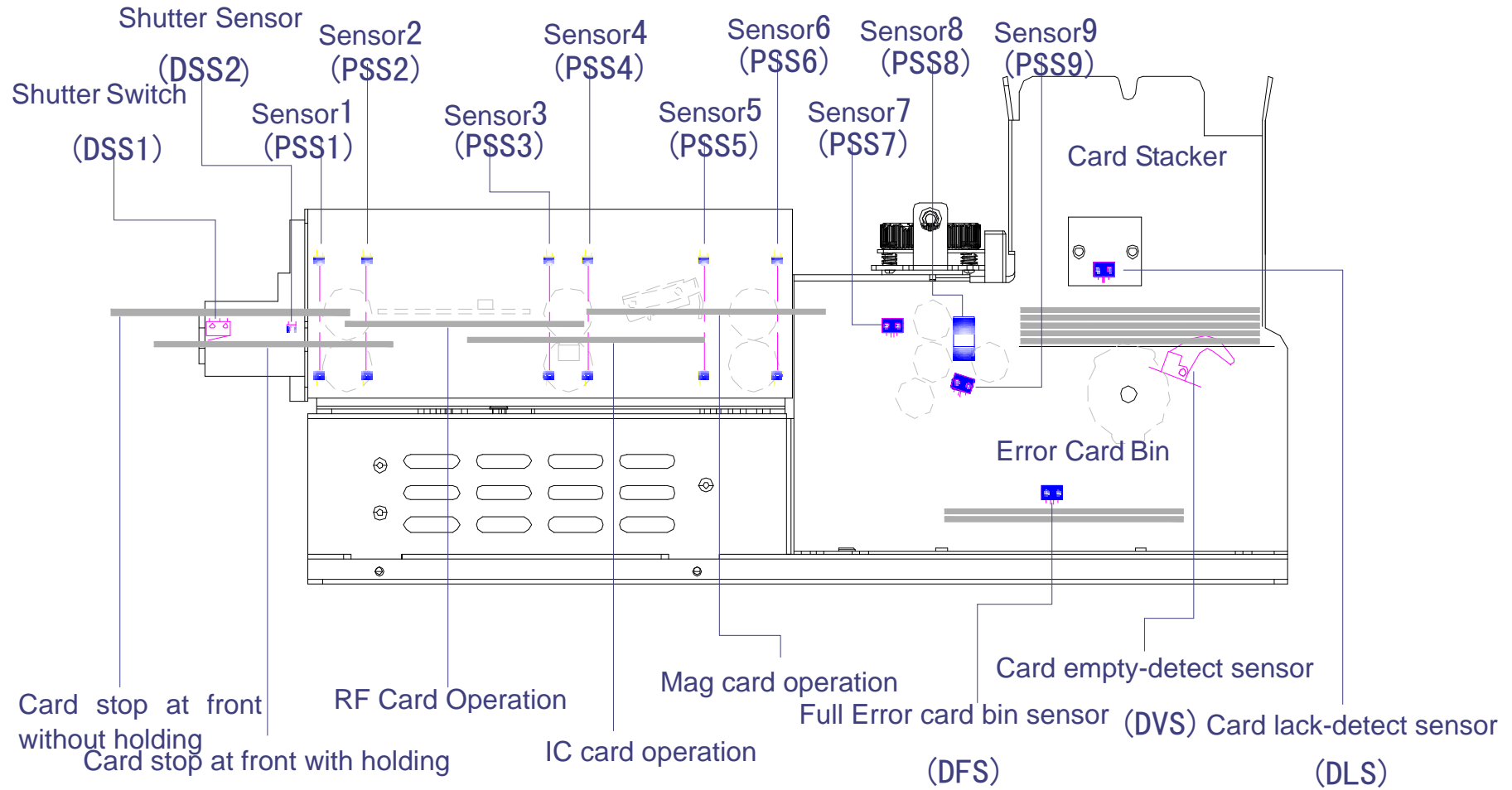
6/9


3. Structure and Dimension Drawings



	SPECIFICATION	Model No.	CRT-591
		Date	2010/3/2
	Card Issuing Machine	Ver.	1.0
		Page	7/9

4. Card Movement Sketch Map



	SPECIFICATION	Model No.	CRT-591
		Date	2010/3/2
	Card Issuing Machine	Ver.	1.0
		Page	8/9

5. General Specification

- **Power Supply**

DC 24V \pm 5%

- **Current Consumption**

Static Current: 0.1A

Peak Current during Operation: 2.0A

Normal Current Condition: 800mA

- **Card Feeding-Out Speed**

> 0.5 Cards/s (Transportation Speed)

- **Communication Interface**

RS232C / USB (HID) (Ex-work setting: Default unit address is '0')

- **Card Dimensions**

Size: 55×86mm

Thickness: 0.2mm~1.0mm (Ex-work standard: 0.8mm)

- **Weight**

4.0 Kg Approx.

- **Dimensions**

Refer to Structure and Dimension Drawings

- **Card Stacking Capability**

Default 120pcs in case of 0.76mm standard card

(Max. card capability: 500pcs)

- **Card Pre-Empty Detection**

Range: 7~50pcs \pm 2pcs (Default setting: 15pcs)

- **Environmental Condition**

Operation: 0~50°C 0~90% RH (Without Condensing)

Storage: -10~75°C 0~90% RH (Without Condensing)


- **Life Time**

1,000,000 times

(In the condition: 20+/-5°C, 35~60%RH, Dispense cycle \leq 1pcs/min)

- **Support ISP Download On Line**

- **Compliant To RoHS**

	SPECIFICATION	Model No.	CRT-591
		Date	2010/3/2
	Card Issuing Machine	Ver.	1.0
		Page	9/9

6. CRT-591 Design Specification

6.1 Card Thickness Adjustment

CRT-591 makes it more accurate and convenient to dispense the cards in different thickness via rotating the turn-knob to different gear position so as to adjust the gap between the upper and lower transmitting wheels, which eliminates the inconvenient and inaccurate gap adjustment defects. With this feature, CRT-591 is quite suitable for the unattended vending devices to dispense various cards of distinct thickness.

There are several steps to adjust the thickness of cards:

1. Confirm the thickness of cards (Ignore the emboss character, make sure dispense the same kind of card)
2. Press the turn-knob and turn around to the graduation pointed by the red arrow. Seeing pictures below.
3. Make sure the adjustment on the right position by insert cards from stacker. (Inserting one card from stacker will be smooth and two cards simultaneously from behind can be impossible)

