

CITIZEN OPOS DRIVER 1.8 Setup Guide

'10/03/29 Rev 1.09

CITIZEN SYSTEMS JAPAN CO.,LTD.

Revision Record

Date	Revision	Description
07/12/21	Rev1.00	New issue
08/10/17	Rev1.01	Installer was changed. (Also related issues were modified.) CT-S281 was newly supported. Unsupported column settings for CT-S200 were deleted. CT-S310 series were separated from CT-S300 series, and some settings for CT-S310 were added.
08/12/12	Rev1.02	Update as follows accompanied by the Ethernet interface correspondence; <ul style="list-style-type: none"> • Add Ethernet to Interface on Object Model Table (Page 5) • Change main screen drawing of setting tool (Page 11) • Add NET designated time of setting tool (Page 16) • Add operation method in the network setting item on the main screen for setting tool (Page 19)
09/02/16	Rev1.03	Update as follows accompanied by memory switch change for printer setting; <ul style="list-style-type: none"> • Delete full digit printing (Pages 30, 31, 32, 33 and 34) Add [Job Receiving Time Out] for print server setting (Page 17) Change network setting method (Page 19)
09/05/07	Rev1.04	Correct as follows due to description errors; <ul style="list-style-type: none"> • Correct CT-S281 I/F (Page 5) • Delete line from CT-S281 Series Table (Page 12) • Correct paper width value for 58 mm on CT-S2000 Series Table (Page 13) Add DLL to Installation Configuration <ul style="list-style-type: none"> • Add MSVCP71.DLL (Page 10) Correct as follows accompanied by the addition of Configuration Utility Function; <ul style="list-style-type: none"> • Replace drawings (Pages 11, 15 and 19) • Correct description of [Paper Sensor Selection] for Printer Detailed Setting • Add [Code Page] description for Printer Detailed Setting • 4.5 Add Tool Menu (Page 26) • 4.6 Add Help Menu (Page 27)
09/06/26	Rev1.05	Add followings due to CT-S801 series correspondence <ul style="list-style-type: none"> • Add CT-S801 to Object Model Table (Page 5) • Add CT-S801 to Windows Driver Corresponding Table (Page 6) • Add Number of Print Digit Table of CT-S801 (Page 13) • Add CT-S801 Series to Printer Setting Table (Page 31) Add the followings accompanied by USB Virtual COM Mode Correspondence <ul style="list-style-type: none"> • Change description regarding USB interface connection (Pages 5 and 6) • Add USB Virtual COM Driver Correspondence Table (Page 7) • Delete USB mode from memory switch setting condition for each model (Pages 26, 28, 29 and 30) Partially correct the Installation Configuration Drawing (Page 10) Change as follows accompanied by the functional change of Configuration Utility <ul style="list-style-type: none"> • Replace main window images (Pages 11 and 17) • Replace printer detailed setting image (Page 15) • Change Write Time-Out Setting Value (Page 15) • Delete [Paper Sensor Selection] (Page 15) • Correct description for [Bit Image Size] and [Image Combined to Printer Resolution] (Page 14)
09/11/10	Rev1.06	The CT-S601 model was added to each item. (Page 5, 6, 7, 15, 35)
09/11/25	Rev1.07	"58mm/35digit" is added to the print digit table. (Page 15)

Date	Revision	Description
10/02/05	Rev1.08	The CT-S851 model was added to each item.(Page 6, 7, 8, 16 and 36) Partially correct the Installation Configuration Drawing (Page 12)
10/03/29	Rev1.09	The CT-S651 model was added to each item.(Page 6, 7, 8, 16 and 36)

Notes

1. Unauthorized use of all or any part of this document is prohibited.
2. The information in this document is subject to change without prior notice.
3. This document has been created with full attention. If, however, you find an error or question, please contact us.
4. We shall not be liable for any effect resulting from operation regardless of the above item 3.
5. If you do not agree with the above terms, you are not permitted to use this driver.

Trademark

Microsoft, Windows 2000, Windows XP, Visual Basic, and Visual C++ are registered trademarks of Microsoft Corporation in the United States and/or other countries. (Official name for Windows is Microsoft Windows Operating System.)

Company names and product names appearing on this document are trademarks and/or registered trademarks of respective companies.

CITIZEN is a registered trademark of Citizen Holdings Co., Ltd.

Contents

1. OPERATING ENVIRONMENT	6
2. INSTALLATION.....	9
3. CONFIGURATION OF INSTALLATION FILES	12
4. OPOS DRIVER SETTING TOOL.....	13
4.1 Adding New Printer and Cash Drawer	14
4.2 Adding New Cash Drawer	22
4.3 Adding Logical Device.....	23
4.4 Deleting Device.....	24
4.5 Tool Menu	28
4.6 Help Menu.....	29
5. UNINSTALL	30
6. PRINTER SETTING	31
6.1 CBM-1000II Series	31
6.2 CT-S281 Series.....	32
6.3 CT-S300 Series.....	33
6.4 CT-S310 Series.....	34
6.5 CT-S2000 Series.....	35
6.6 CT-601/651/S801/851 Series.....	36
6.7 CT-S4000 Series.....	37
6.8 CD-S500 Series	38

1. Operating Environment

Operating System

This driver supports the following Windows operating systems

- Windows 2000
- Windows XP

Object Models

Object models of this product and the corresponding interface are as shown below.

For details of each model, refer to the Printer User's Guide.

Series of Model	Object Model	Interface	Printer Functions
CBM-1000II	CBM-1000TypeII	Serial, Parallel, USB, Ethernet	Standard
	CBM-1000TypeII- L	Serial, Parallel, USB, Ethernet	Blackmark paper and label paper are supported.
CT-S281	CT-S281	Serial, USB	Standard
CT-S300	CT-S300	Serial, Parallel, USB, Ethernet	Standard (Paper with blackmark on front side is supported.)
	CT-S300-M1/M2	Serial, Parallel, USB, Ethernet	Paper with blackmark on back side is supported.
CT-S310	CT-S310	Serial, Parallel, USB, Ethernet	Standard (Paper with blackmark on front side is supported.)
	CT-S310-M1/M2	Serial, Parallel, USB, Ethernet	Paper with blackmark on back side is supported.
CT-S2000	CT-S2000	Serial, Parallel, USB, Ethernet	Standard
	CT-S2000-M	Serial, Parallel, USB, Ethernet	Blackmark paper is supported
	CT-S2000-L	Serial, Parallel, USB, Ethernet	Label paper is supported.
CT-S601	CT-S601/651/801/851	Serial, Parallel, USB, Ethernet	Standard
CT-S651	CT-S601/651/801/851-M	Serial, Parallel, USB, Ethernet	Blackmark paper is supported
CT-S801	CT-S801-L	Serial, Parallel, USB, Ethernet	Label paper is supported.
CT-S4000	CT-S4000	Serial, Parallel, USB, Ethernet	Standard (Paper with blackmark on front side is supported.)
	CT-S4000-M	Serial, Parallel, USB, Ethernet	Paper with blackmark on back side is supported.
	CT-S4000-L	Serial, Parallel, USB, Ethernet	Label paper is supported.
CD-S500	CD-S500	Serial, Parallel, USB, Ethernet	Standard type (Without cutting feature)
	CD-S501	Serial, Parallel, USB, Ethernet	With cutting feature
	CD-S503	Serial, Parallel, USB, Ethernet	Rewinder equipped (With cutting feature)

USB Interface Connection

Installation of printer driver is required when using this product with USB connection. In addition, the kind of driver for installation differs by the USB mode setting of printer.

1) In the case when USB Mode is Printer Class

Perform the installation of Windows Driver. Designate USB Interface Port (Virtual Printer Port for USB) which

is designated by the Windows Driver at OPOS Driver side.

2) In the case when USB Mode is Virtual COM

Perform installation of Virtual COM Driver. Designate serial interface port designated on the Virtual COM driver at OPOS Driver side.

Parallel Interface Connection

If the terminal and the printer are connected together through parallel interface, the installation wizard requesting you to install printer driver each time you start the terminal may start. To prevent this installation wizard from starting install Windows driver.

Installing Windows Driver

Windows drivers corresponding to individual models are as shown below. For the method of Windows driver installation, refer to "Windows Driver Guide" supplied with Windows driver.

Object Model	Windows Driver Name	Printer Function
CBM-1000TypeII	CITIZEN CBM1000 Type II	Standard
CBM-1000TypeII- L	CITIZEN CBM1000 Type II Label	Blackmark paper and label paper are supported.
CT-S281	CITIZEN CT-S281	Standard
CT-S300	CITIZEN CT-S300	Standard (Paper with blackmark on front side is supported.)
CT-S300-M1/M2	CITIZEN CT-S300 Black Mark	Paper with blackmark on back side is supported.
CT-S310	CITIZEN CT-S300	Standard (Paper with blackmark on front side is supported.)
CT-S310-M1/M2	CITIZEN CT-S310 Black Mark	Paper with blackmark on back side is supported.
CT-S2000	CITIZEN CT-S2000	Standard
CT-S2000-M	CITIZEN CT-S2000	Blackmark paper is supported.
CT-S2000-L	CITIZEN CT-S2000	Label paper is supported.
CT-S601/651/801/851	CITIZEN CT-S601/651/801/851	Standard
CT-S601/651/801/851-M	CITIZEN CT-S601/651/801/851 Black Mark	Blackmark paper is supported.
CT-S801-L	CITIZEN CT-S801 Label	Label paper is supported.
CT-S4000	CITIZEN CT-S4000	Standard (Paper with blackmark on front side is supported.)
CT-S4000-M	CITIZEN CT-S4000	Paper with blackmark on back side is supported.
CT-S4000-L	CITIZEN CT-S4000 Label	Label paper is supported.
CD-S500	CITIZEN CD-S500	Standard type (Without cutting feature)
CD-S501	CITIZEN CD-S501/503	With cutting feature
CD-S503	CITIZEN CD-S500/503	Rewinder equipped (With cutting feature)

Windows driver includes two types: a driver with status function (language monitor) that allows checking of printer status and a driver without status function. When using this driver, **be sure to install the Windows driver without status function.**

* Use of this driver together with Windows driver having status function is not permitted.

Installation of USB Virtual COM Driver

Install virtual COM driver corresponding to each model. Please refer to [Virtual COM Driver Installation Guide] attached to virtual COM driver for the installation method of virtual COM driver.

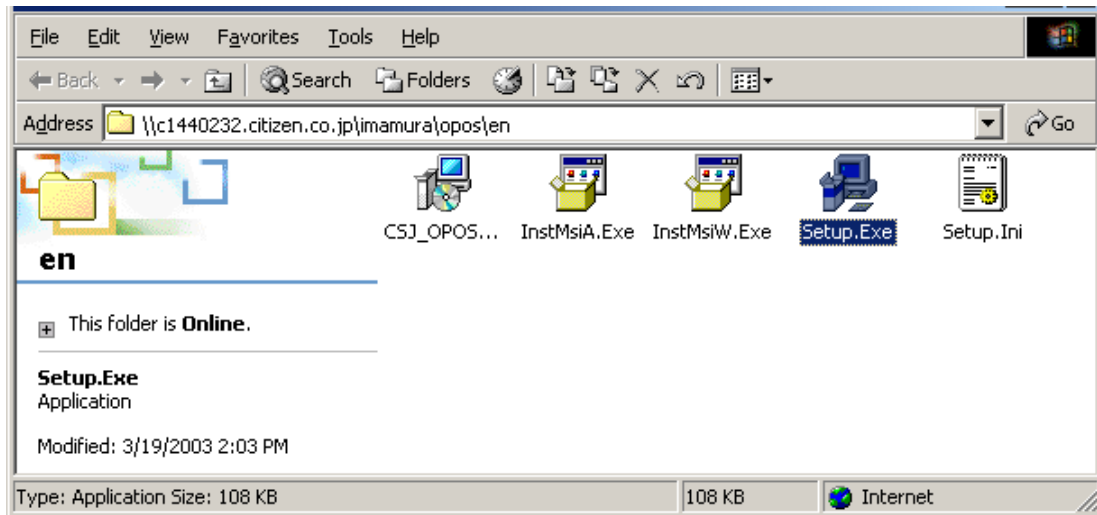
In addition, corresponding status of USB virtual COM mode for each model is shown on the table below;

Model Name	Corresponding Status for Virtual COM Mode	Port Name (Port Number)
CBM-1000TypeII	Not supported	-
CBM-1000TypeII- L		
CT-S281	Supported	Ctvrcom Virtual Communication Port (COM7)
CT-S300	Not supported	-
CT-S300-M1/M2		
CT-S310	Supported	Ctvrcom Virtual Communication Port (COM8)
CT-S310-M1/M2		
CT-S2000	Supported	Ctvrcom Virtual Communication Port (COM8)
CT-S2000-M		
CT-S2000-L		
CT-S601/651/801/851	Supported	Ctvrcom Virtual Communication Port (COM8)
CT-S601/651/801/851-M		
CT-S801-L		
CT-S4000	Supported	Ctvrcom Virtual Communication Port (COM8)
CT-S4000-M		
CT-S4000-L		
CD-S500	Not supported	-
CD-S501		
CD-S503		

2. Installation

The installation procedure for this product is described below.
Before installation, shut down all applications in operation.

- 1) Run Setup.exe (installer).
After starting, follow the installation procedure in accordance with the dialog.



- 2) Setup wizard starts. Click [Next].



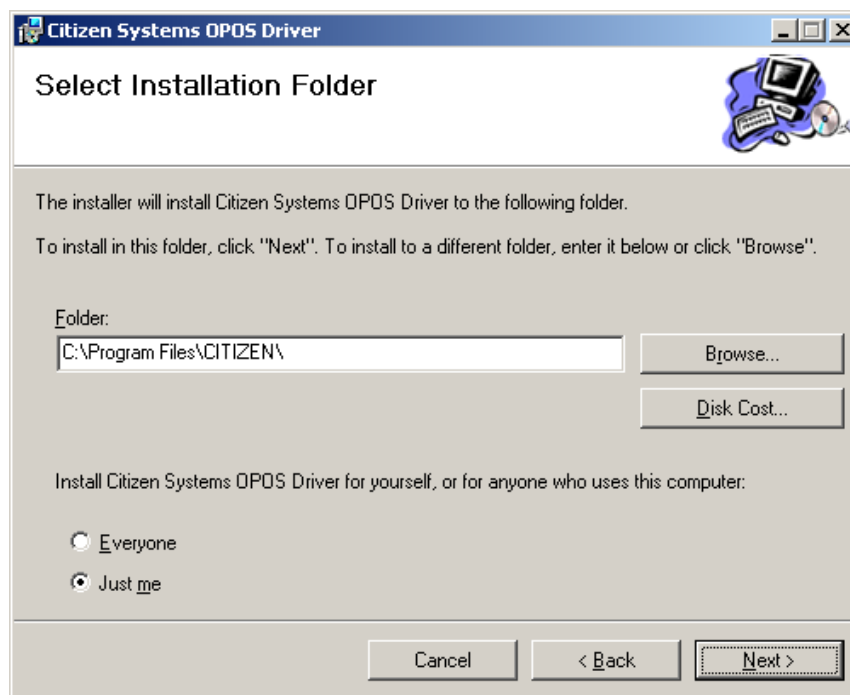
- 3) "License Agreement" window is displayed.

If you agree with the product license agreement, select "I Agree" and click [Next]. If you do not agree with the product license agreement, select "I Do not Agree" and click [Next] to exit the wizard.

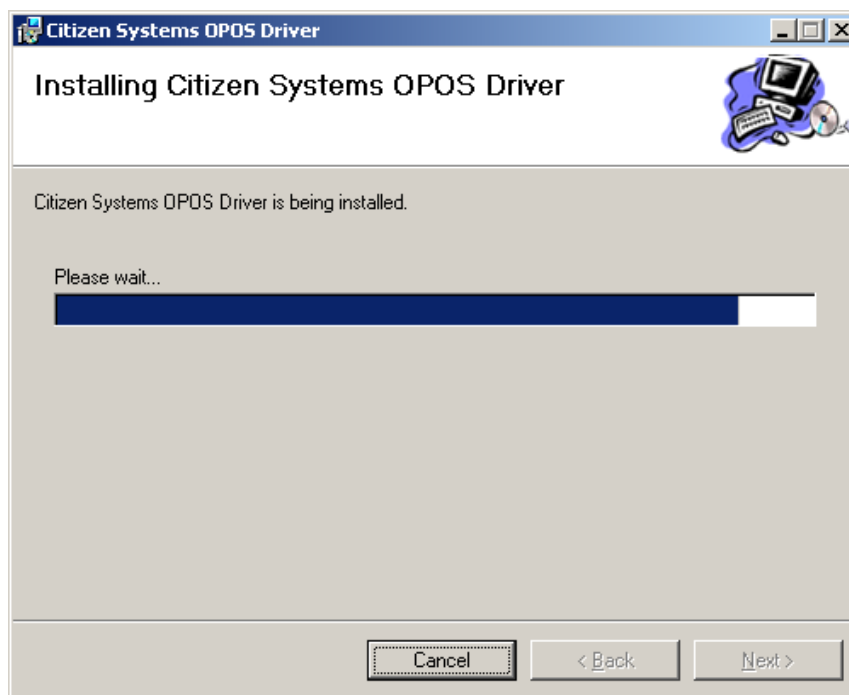


- 4) "Select Installation Folder" window is displayed.

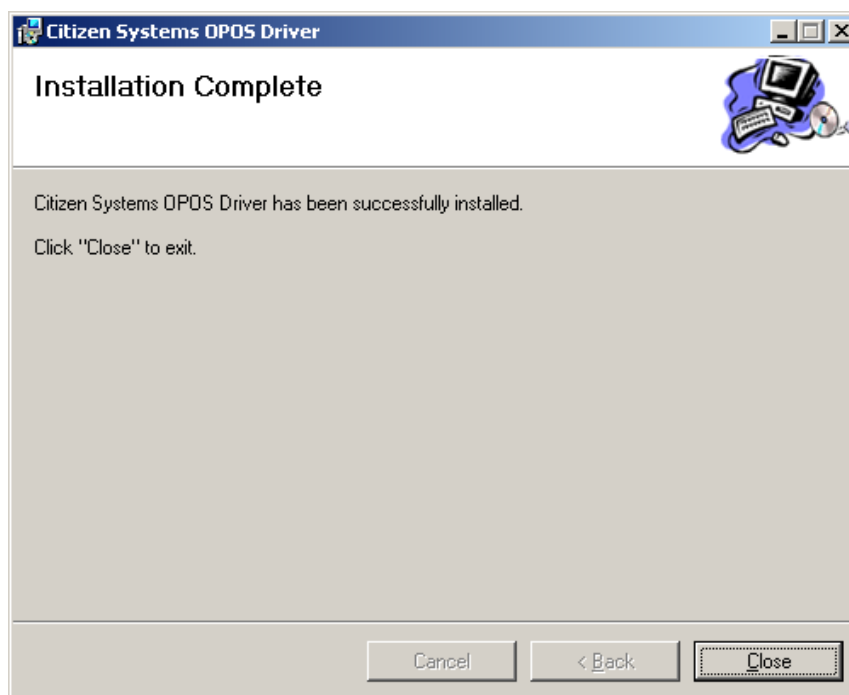
Specify the folder to install. If you use a default folder, click [Next]. If you want to change the folder, change the folder you want to install.



- 5) The installation progress status window is displayed.
(It may take longer time to install depending on the environment or specifications of the terminal.)



- 6) When the installation is successful, "Installation Completed" window is displayed.
Click [Close].



3. Configuration of Installation Files

The following provides the description on the installation files of this product.

“Install Folder”¥CITIZEN¥CITIZENServiceObject

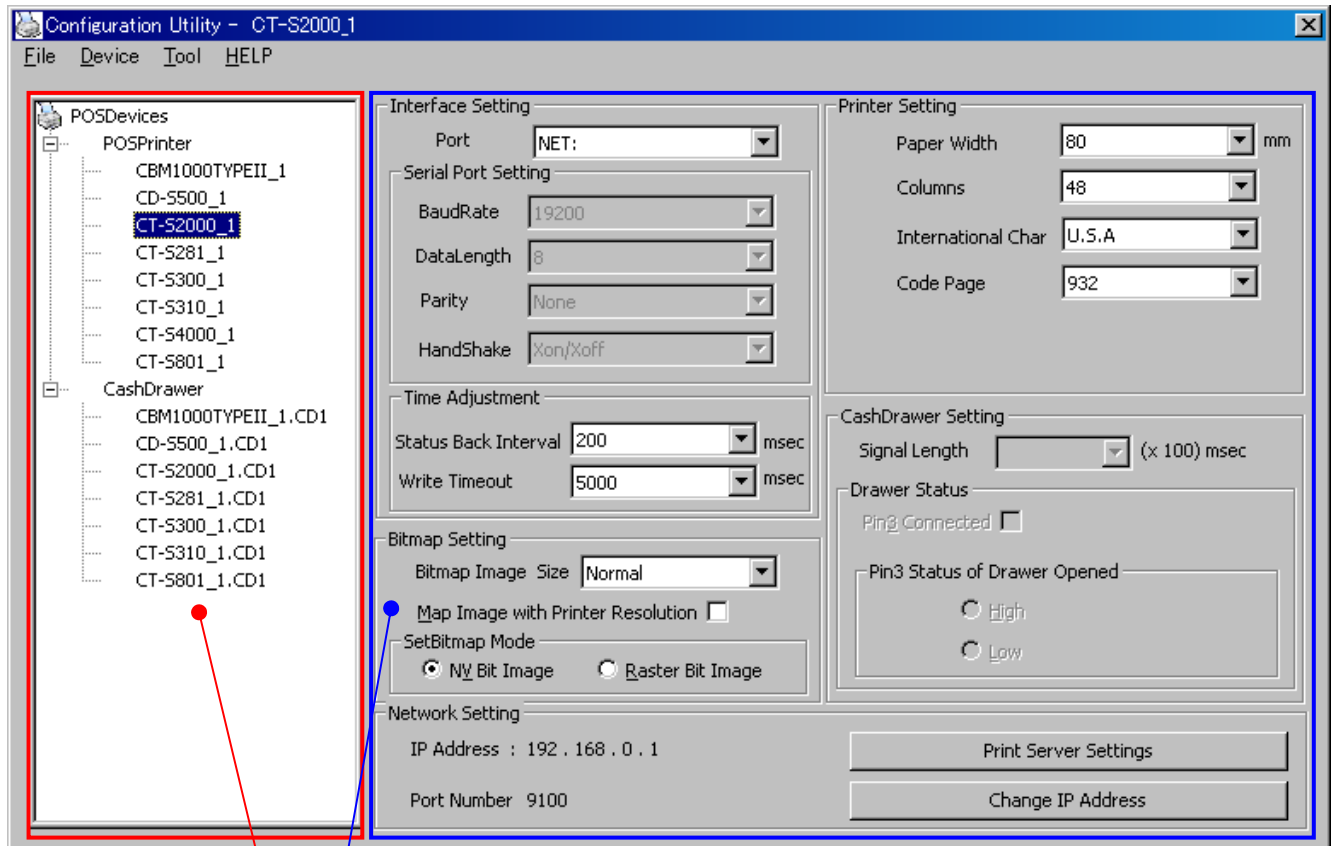
— BcWidth.DLL	(Enhanced Library of service object)
— CBMDSO.DLL	(Dot impact printer service object)
— CBMSocketMon.DLL	(Ethernet interface socket monitor)
— CBMPortMon.DLL	(Line thermal printer port monitor)
— CBMTSO.DLL	(Line thermal printer service object)
— ConfigurationUtility.EXE	(OPOS driver setting tool)
— DMCBMPortMon.DLL	(Dot impact printer port monitor)
— Japanese.DLL	(Resource of OPOS driver setting tool)
— MFC71CHS.DLL	(Library of OPOS driver setting tool)
— MFC71CHT.DLL	
— MFC71DEU.DLL	
— MFC71ENU.DLL	
— MFC71ESP.DLL	
— MFC71FRA.DLL	
— MFC71ITA.DLL	
— MFC71JPN.DLL	
— MFC71KOR.DLL	
— MFC71U.DLL	(Library of Service object and OPOS driver setting tool)
— MFC71.DLL	
— MSVCR71.DLL	
— MSVCP71.DLL	
— OPOSCashDrawer.OCX	(Cash drawer control object)
— OPOSPOSPrinter.OCX	(Printer control object)
— OPOSSeulaJ.RFT	(License Agreement of OPOS driver)

4. OPOS Driver Setting Tool

This section provides the description of the method of using Configuration Utility. When this driver is installed, a shortcut icon is registered in the Windows Start Menu.

"Start" → "Program" → "CITIZEN" → "CITIZEN Thermal POS Printer" → "Configuration Utility"

Main Screen

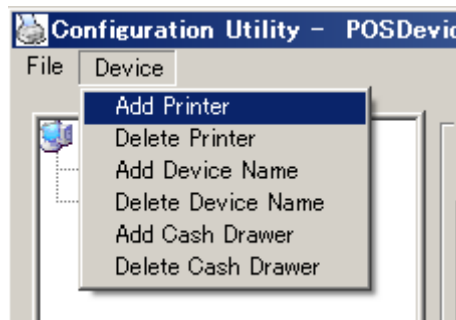


Setting view: Indicates the setting of each device (Direct change of setting is available).

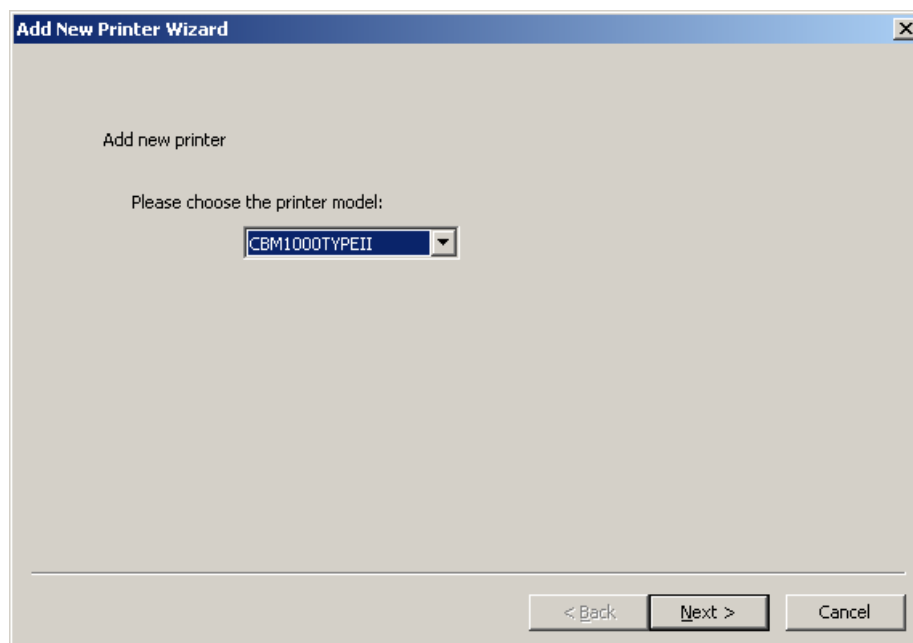
Device view: Tree of physical devices and logical devices is indicated.

4.1 Adding New Printer and Cash Drawer

- 1) Click "Add Printer" from the Device menu.



- 2) "Add Printer" wizard starts.
Select the model to add and click [Next].
(Here specify CBM1000TYPEII.)



For the function of each printer, refer to the section in "1 Operating Environment".

- 3) "Choose the printer type" window is displayed.
Specify the size of paper width used and the maximum number of columns per line referring to the following table.
This setting is interlocked with the default value of the "RecLineChars/RecLineCharsList" property.
For details, refer to Application Development Guide of this product.

CBM-1000TypeII Series

Paper Size (mm)	Font A (12*24dot)	Font B (9*24dot)	Max. print columns
80	30	40	30
	36	48	36
	42	56	42
	48	64	48

CT-S281 Series

Paper Size (mm)	Font A (12*24dot)	Font B (9*24dot)	Font C (8*16dot)	Max. print columns
58	30	40	45	30

CT-S300/CT-S310 Series

Paper Size (mm)	Font A (12*24dot)	Font B (9*24dot)	Font C (8*16dot)	Max. print columns
80	30	40	45	30
	32	42	48	32
	42	56	63	42
	48	64	72	48

CT-S2000 Series

Paper Size (mm)				Font A (12*24dot)	Font B (9*24dot)	Font C (8*16dot)	Max. print columns
83	80	60	58	30	40	45	30
				36	48	54	36
				35	46	52	35
				36	48	54	36
				42	56	64	42
				48	64	72	48
				53	71	80	53

CT-S601/651/801/851 Series

Paper Size (mm)				Font A (12*24dot)	Font B (9*24dot)	Font C (8*16dot)	Max. print columns
83	80	60	58	30	40	45	30
				36	48	54	36
				35	46	52	35
	80	60	58	36	48	54	36
				42	56	64	42
				48	64	72	48
							53

CT-S4000 Series

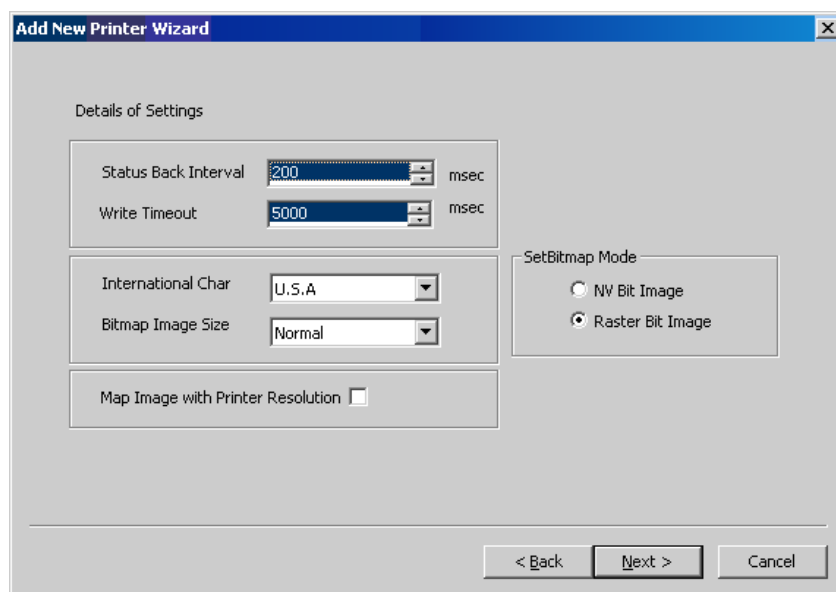
Paper Size (mm)			Font A (12*24dot)	Font B (9*24dot)	Font C (8*16dot)	Max. print columns
112	82.5	80	42	56	64	42
			48	64	72	48
			55	73	82	55
			60	80	90	60
			69	92	104	69

CD-S500 Series

Paper Size (mm)			Font A (9*9dot)	Font B (7*9dot)	Max. print columns
76.2	69.5	57.5	25	30	25
			27	33	27
	69.5	57.5	30	36	30
			32	40	32
			33	40	33
			35	42	35

After setting the above, click [Next].

- 4) "Details of settings" window is displayed.
Settings of each item are as shown below.



Status Back interval

Set the polling interval for acquiring printer status.

Setting range: 100 to 900msec

Write Timeout

Set the write timeout for output port.

Setting range: 5000 to 1,000,000msec

International Char

Specify a international character table to use.

Set value: U.S.A/France/Germany/U.K./DenmarkI/Sweden/Italy/SpainI/Japan/Norway/Denmark II/Spain II/Latin America/Korea

Code Page

Designate code page (Selection content differs by the model)

Setting Value: 437/ 850/ 852/ 857/ 858/ 860/ 863/ 864/ 865/ 866/ 874/ 932/ 998/ 999/ 1252/

User Defined/

SetBitmap Mode

Specify the bit image mode of the SetBitmap method. For details of this mode, refer to Application Development Guide of this product.

Set value: NV bit image/Raster bit image

Bitmap image size

Specify the rate of print enlargement of the bit image registered in the SetBitmap method and PrintBitmap method.

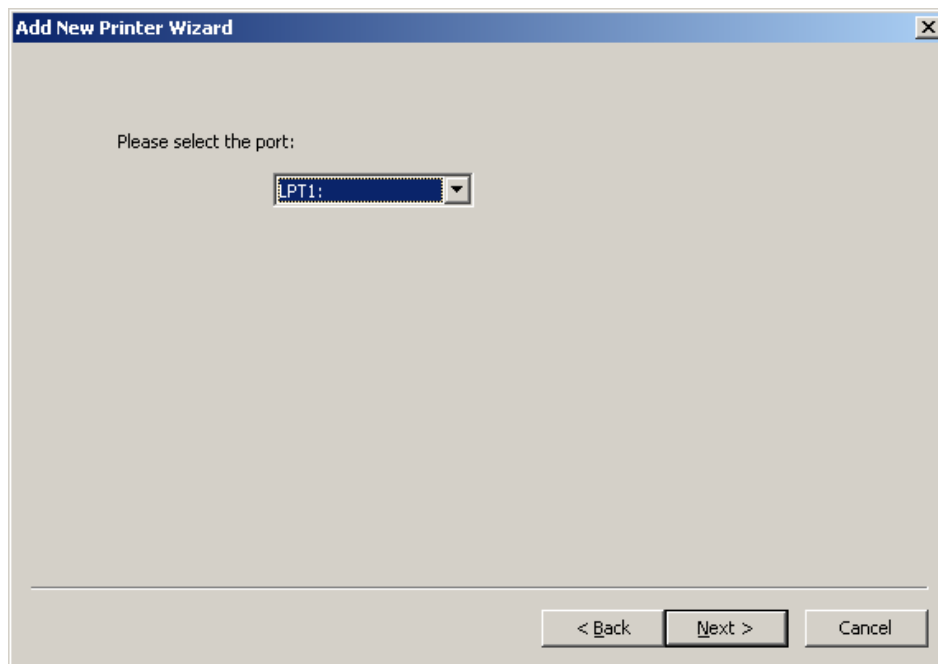
Set value: Normal/Double-Width/Double-Height/Quadruple

Map image with Printer Resolution

By setting the set-up to be valid, output the bit image designated by SetBitmap and PrintBitmap according to printer resolution.

After the above setting, click [Next].

- 5) "Select the port." window is displayed.
Select a port to be used and click [Next].

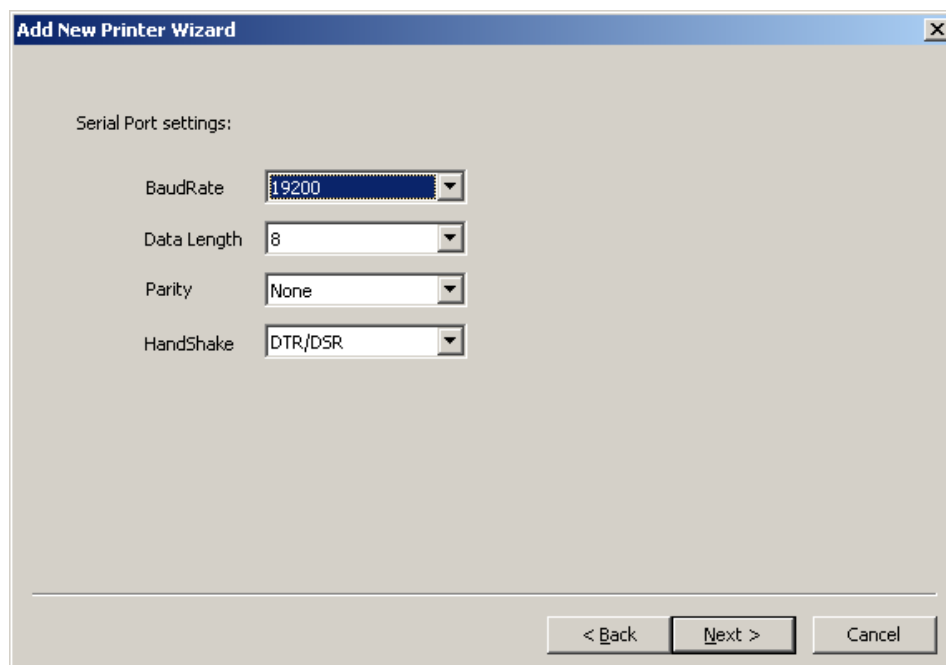


When the COM port is specified, the "Serial Port settings" window is displayed.

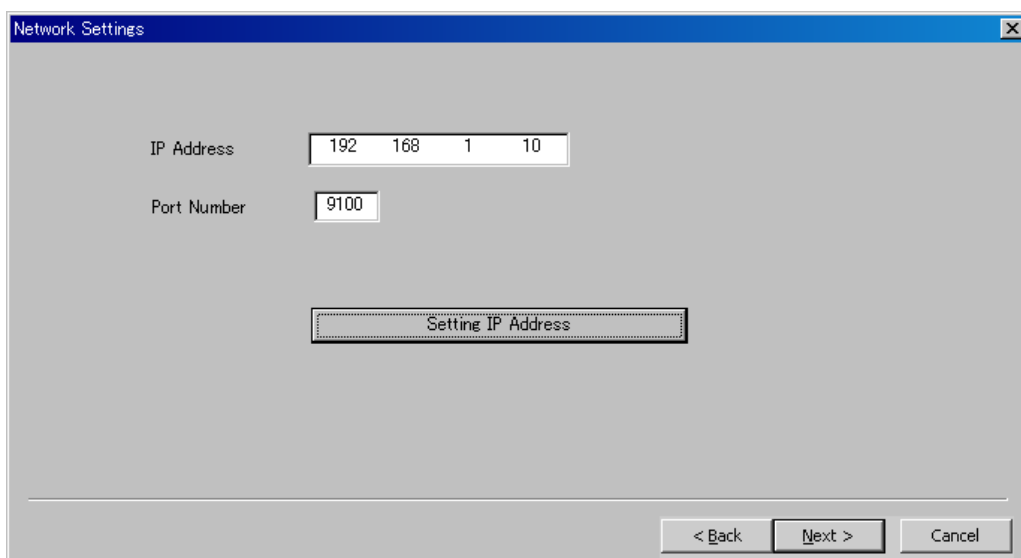
Specify "Baud rate", "Data length", "Parity", and "Flow control" and then click [Next].

* Communication is not available unless the serial port settings at the printer and at the terminal are the same.

For the serial port setting of the printer, refer to the printer User's Guide.



A window of [Network Setting] is displayed at NET designation. Enter [IP Address] and [Port Number] to be used.



※ When [Print Server Setting] is clicked, the print server setting tool is booted up. Please refer to the attached manual in the tool for the method of using the tool.

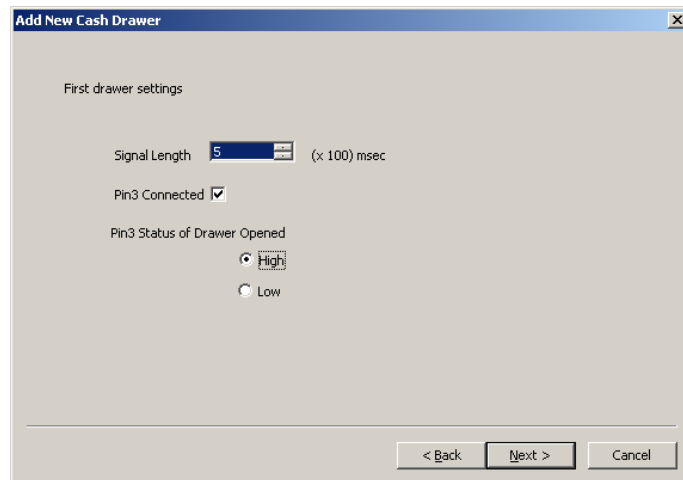
※ Set [Job Receive Time Out] at [Print Server Setting].

It is recommended to set [120] for the number of seconds until the connection being cut off. After above setting, please click [Next].

- 6) Then the "Add new cash drawer" wizard starts.
Specify the number of cash drawers connected to the printer and click [Next].



If "One Cash Drawer" or "Two Cash Drawers" is specified, the "First drawer settings" window is displayed.



Signal Length

Specify the time width of the pulse signal output to the solenoid of the cash drawer.
Setting range: 1 to 10msec

Pin3 Connected

Check this when the pin 3 (drawer switch input) of the drawer kick connector is connected.

Pin3 Status of Drawer Opened

Specify the drawer switch input signal level with cash drawer open.
Setting value: High/Low

After the above setting, click [Next].

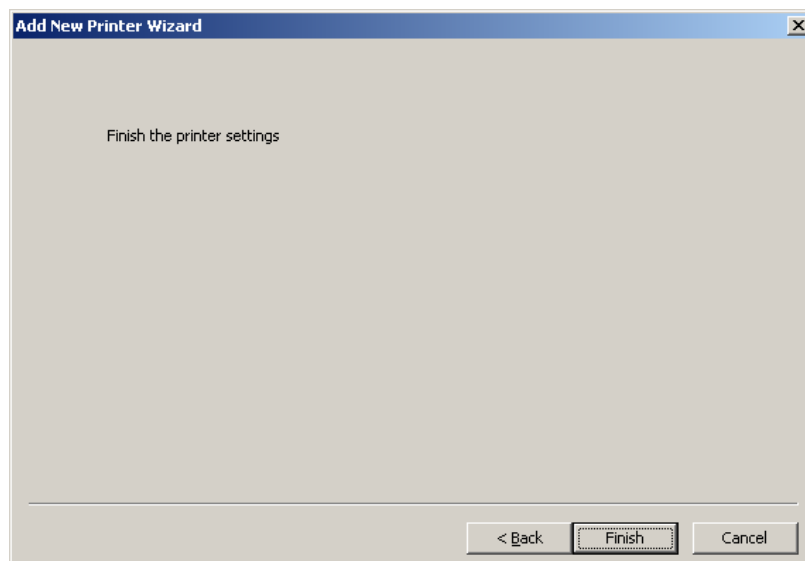
* When "Two Cash Drawers" is specified, clicking [Next] causes the "Second drawer settings" window is displayed.

Set the second cash drawer as in the same manner as the above and click [Next].

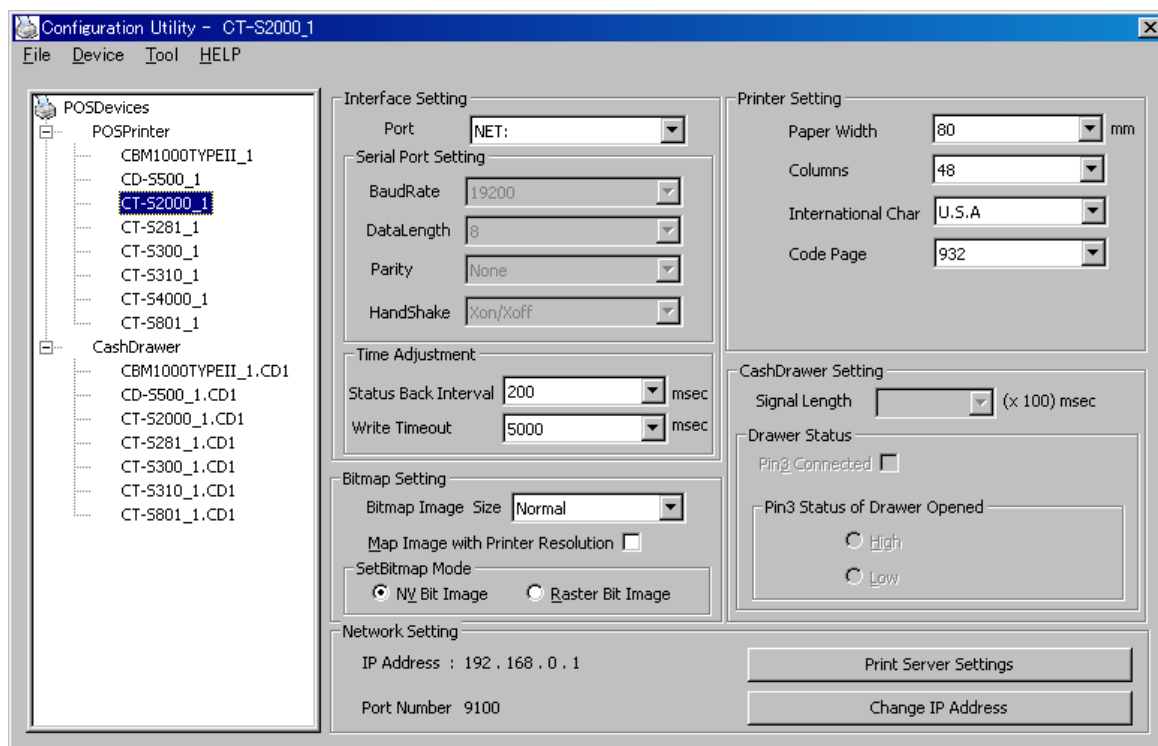
- 7) "Finish the printer setting" window is displayed.

Click [Finish]. Here, this tool performs registration processing for system registry.

* It takes some time till registration of system registry is completed.



- 8) When this wizard is finished, the printer and the cash drawer registered in "Device view" and "Setting view" are indicated.



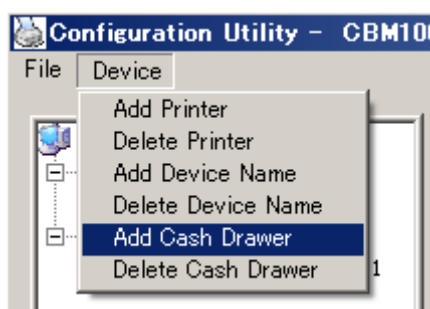
* Setting of each item can be changed directly from Setting View.

Each time setting of item is changed, the change is reflected to the system registry immediately.

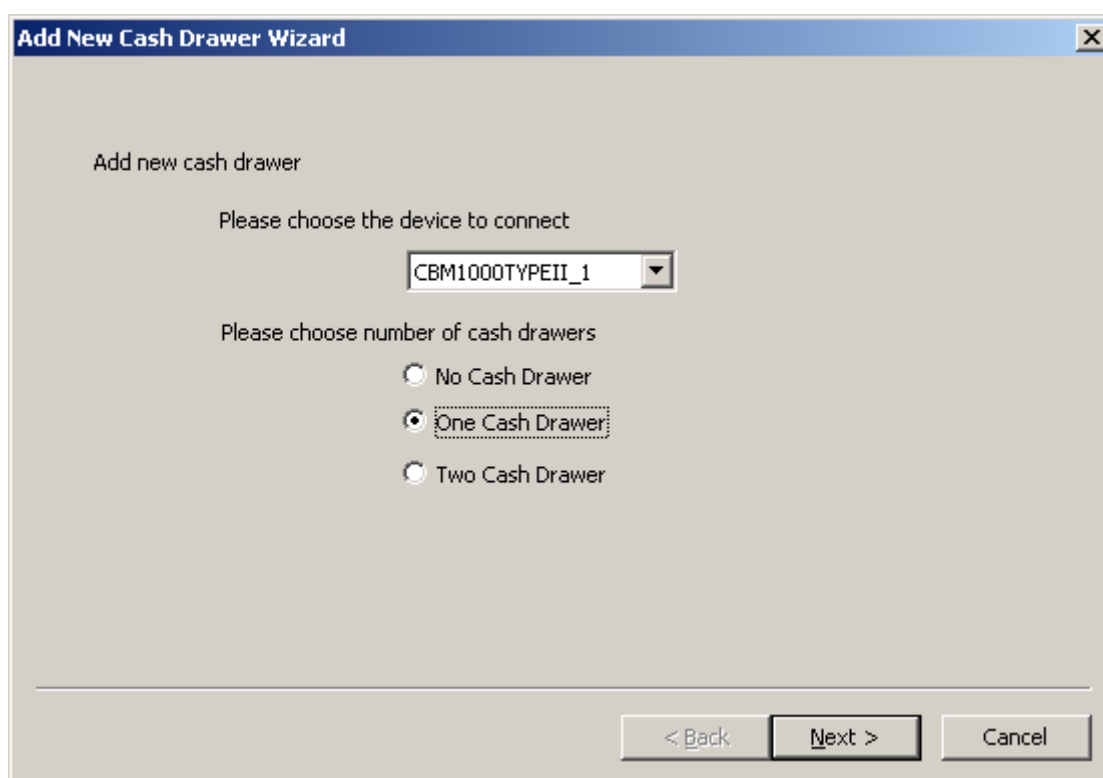
* When changing [IP Address] and [Port Number] in the items of [Network Setting], click [IP Address Change] for setting.

4.2 Adding New Cash Drawer

- 1) Click "Add Cash Drawer" from the "Device" menu.
 - * Be sure to execute Add Cash Drawer after finishing printer registration.



- 2) "Add new cash drawer" wizard starts.

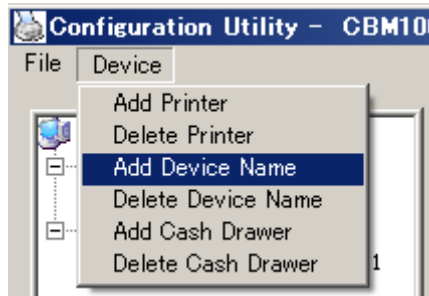


Following this step, refer to the description in "6) Then the "Add new cash drawer" wizard starts" of the section "4.1 Adding New Printer and Cash Drawer" and later, and perform adding drawer procedure in the same manner.

4.3 Adding Logical Device

A logical device name can be assigned to the printer and cash drawer registered.

- 1) Click "Add Device Name" in the "Device" menu.

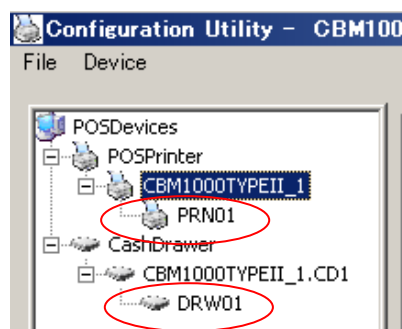


- 2) "Add Device" window is displayed.
The printer or cash drawer registered is shown in the list of "Select the device". Select the object printer or cash drawer and enter a logical device name in the text box of "Enter the device name".



After the above setting, click [Add]. If [Cancel] is clicked, the above setting is discarded.

- 3) After completion of the above procedure, the added logical device name is indicated on the Device view.

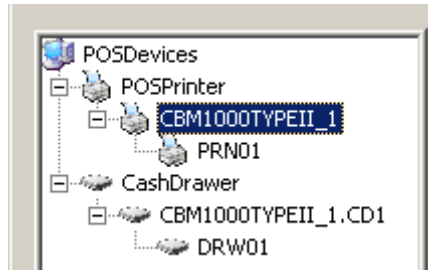


4.4 Deleting Device

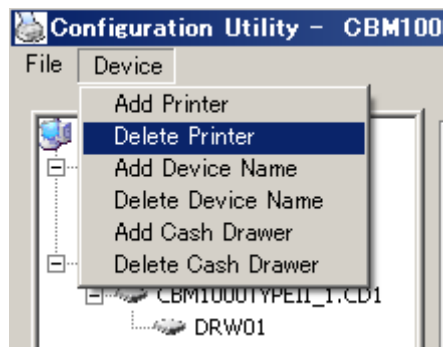
This section describes deletion of physical device (printer) and cash drawer registered.

Deleting Printer

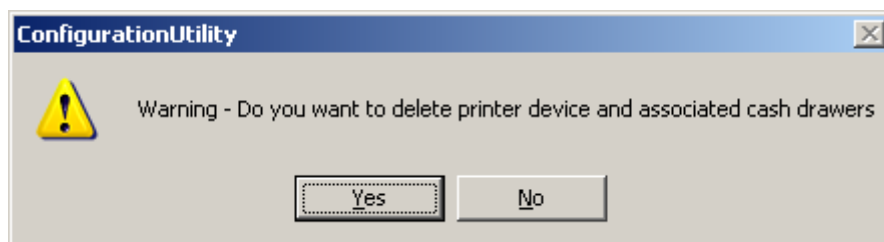
- 1) Select the printer you want to delete from the "POSPrinter" list of Device view.



- 2) Click "Delete Printer" in the "Device" menu.



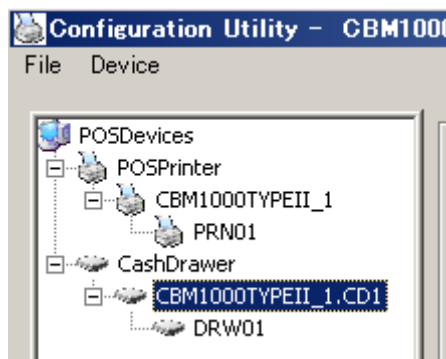
- 3) Message dialog "Warning - Do you want to delete printer device and assorted cash drawers" is displayed.
Click [Yes (Y)]. If you click [No (N)], deleting the printer is aborted.



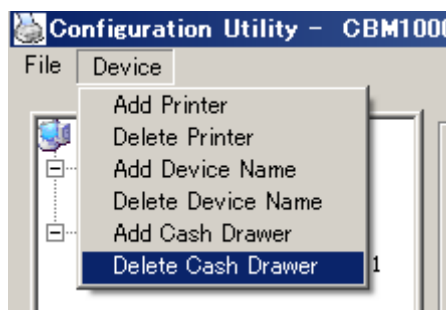
* When deleting a printer is carried out, all the registered drawer and logical device are deleted.

Deleting Cash Drawer

- 1) Select a cash drawer you want to delete from the "CashDrawer" list of the Device view.



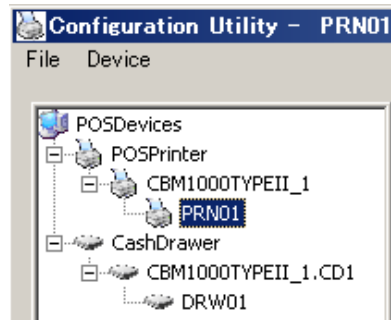
- 2) Click "Delete Cash Drawer" on the "Device" menu.



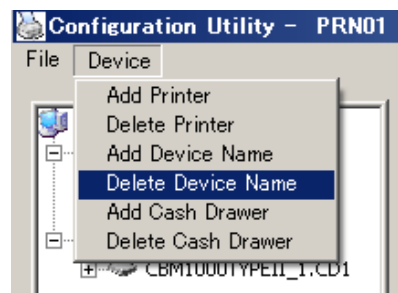
* When deleting a drawer is carried out, logical device is also deleted (printer is not deleted).

Deleting Logical Device (Printer)

- 1) Select a logical device to delete from the "POSPrinter" of the Device view.

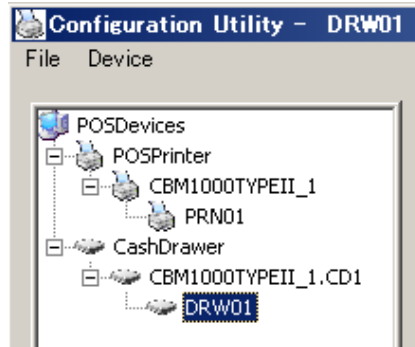


- 2) Click "Delete Device Name" on the "Device" menu.

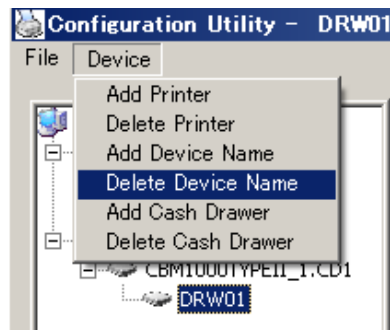


Deleting Logical Device (Cash Drawer)

- 1) Select a logical device you want to delete from the "CashDrawer" list of the Device view.



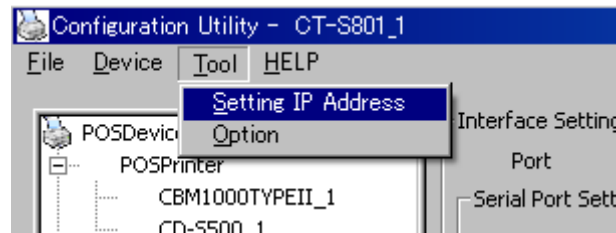
- 2) Click "Delete Device Name" on the "Device" menu.



4.5 Tool Menu

Print Server Setting

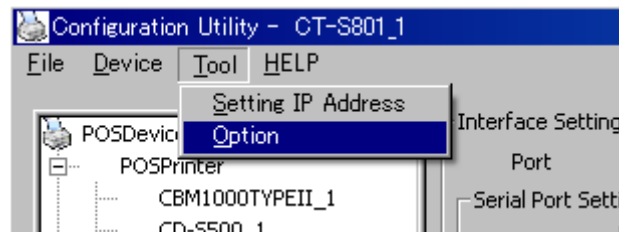
- 1) Click [Print Server Setting] from [Tool] Menu.



- ※ When [Print Server Setting] is clicked, the print server setting tool is booted up. Please refer to the attached manual in the tool for the method of using the tool

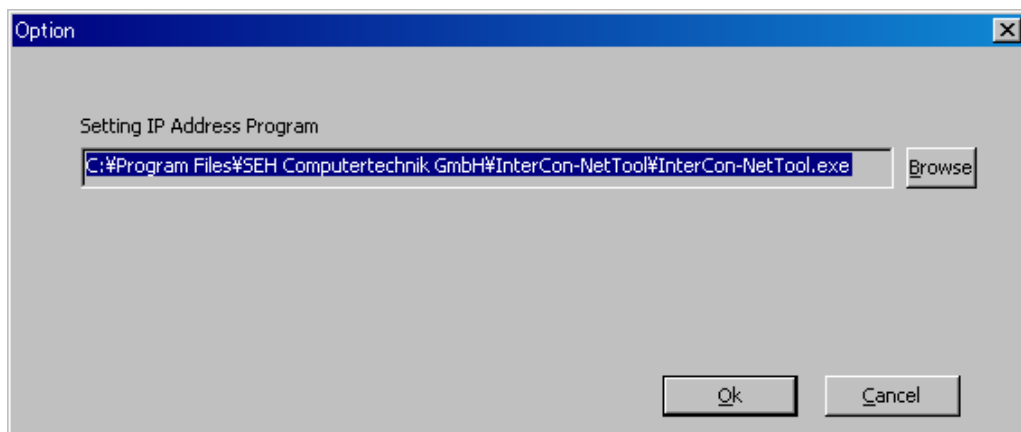
Option Setting

- 1) Click [Setting of Option] from [Tool] Menu.



- 2) [Option Setting] dialog is displayed.

In case when print server setting program has not been installed into default directory, designation is possible from the screen.

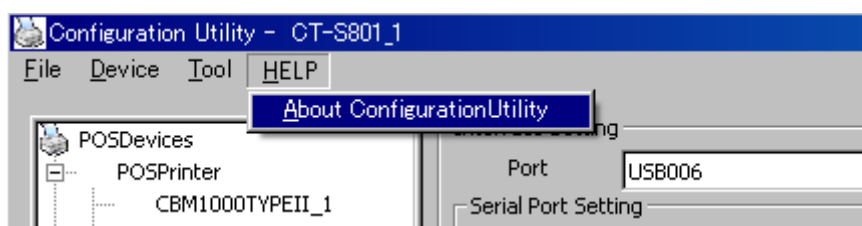


- ※ C:\Program Files\SEH Computertechnik GmbH\InterCon-NetTool\InterCon-NetTool.exe is the default setting when OPOS driver installation.

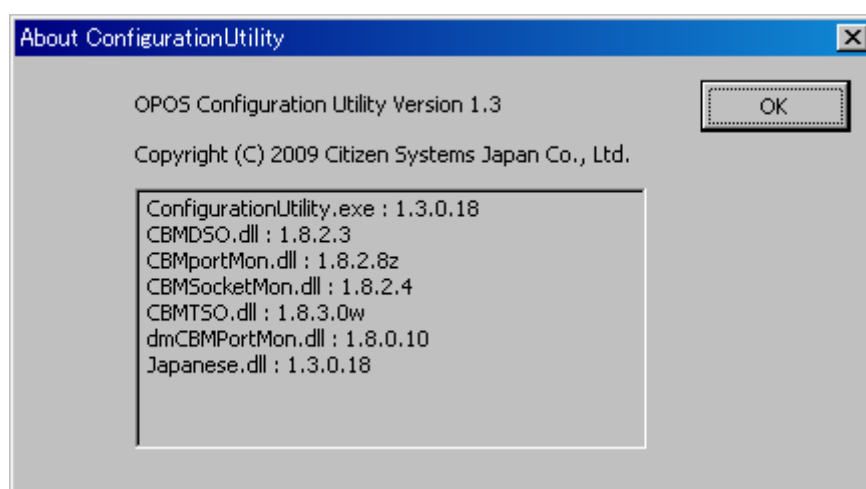
4.6 Help Menu

Version Information

- 1) Click [Regarding Configuration Utility] from [Help] Menu.



- 2) [Regarding OPOS Configuration Utility] dialog box is displayed.
Details on version information for OPOS Driver/OPOS Configuration Utility can be viewed.



5. Uninstall

Uninstall of this product is explained.

Deleting System Registry

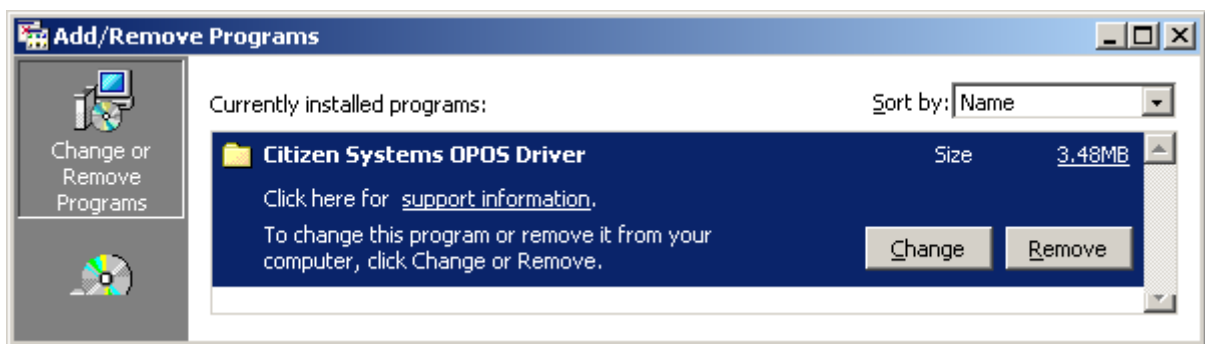
Physical and logical devices are deleted by Configuration Utility.

For the method of deleting device, refer to the section [“4.4 Deleting Device”](#).

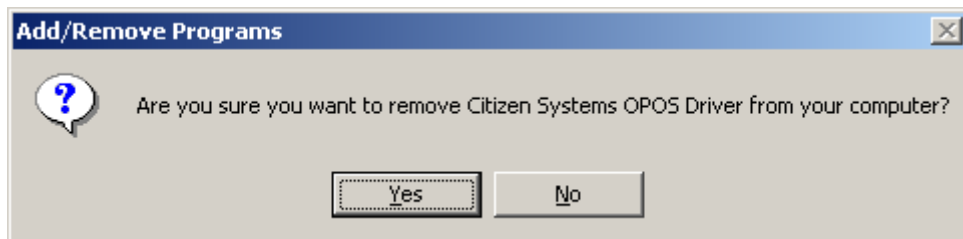
* When upgrading this product, retaining the registered device setting is recommended.

Deleting OPOS Driver

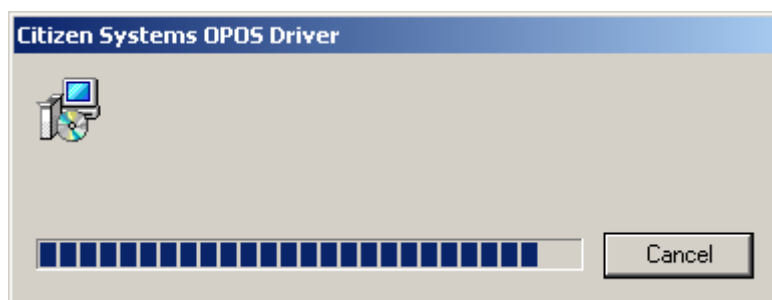
- 1) From the “Add or Remove Programs” in “Control Panel”, select “Citizen Systems OPOS Driver” and click [Remove].



- 2) A message dialog “Are you sure you want to remove Citizen Systems OPOS Driver from you computer?” is displayed.
Click [Yes (Y)]. If you click [No (N)], deleting this program is cancelled.



- 3) A dialog indicating the progress of uninstall process is displayed.



- 4) When the uninstall procedure is finished normally, “Citizen Systems OPOS Driver” is removed from the “Add or Remove Programs” list.

6. Printer Setting

Using this product assumes that the DIP switch and memory switch of the printer are set as shown below. For the details of the method of operating each switch and the content of setting, refer to User's Guide of each model.

6.1 CBM-1000II Series

DIP Switch Setting

DSW No.	Function	Setting	Description
1-1	Auto cutter	ON	With auto cutter
1-5	CR mode	OFF	Ignored
1-6	Input buffer	OFF	4KB
2-1	Select character code table.	ON	Katakana
2-2		OFF	
2-3		OFF	
2-4		OFF	
2-5	JIS/Shift-JIS	ON	Shift-JIS
2-6	Condition for BUSY state	ON	Receiving buffer full
3-7	DSR (when serial interface is used)	OFF	DSR
3-8	INIT (when serial interface is used)	OFF	Disabled

* This model has no software switch function.

6.2 CT-S281 Series

DIP Switch Setting

DSW No.	Function	Setting	Description
8	INIT (when serial interface is used)	OFF	Disabled

Memory Switch Setting

MSW No.	Function	Setting	Description
1-1	Power ON notify setting	OFF	Enabled
1-2	Input buffer	OFF	4KB
1-3	Busy condition	ON	Buffer full
1-4	Receiving error character	OFF	Character?
1-5	CR mode	OFF	Disabled
1-7	DSR signal (when serial interface is used)	OFF	DSR
1-8	INIT signal (when serial interface is used)	OFF	-
2-2	Auto cutter operation	ON	Enabled
3-1	Auto cutter restore	OFF	L/F enabled
3-7	CBM270-compatible mode	ON	compatible
3-8	Cover opened while printing	OFF	Auto restore
4-8	Full cut command	OFF	Full cut
9-1	Code page	Katakana	-
9-2	Foreign language characters	Japan	-
9-3	Kanji	Enabled	-
9-4	JIS/Shift-JIS	Shift-JIS	-

6.3 CT-S300 Series

DIP Switch Setting

DSW No.	Function	Setting	Description
8	INIT (when serial interface is used)	OFF	Disabled

Memory Switch Setting

MSW No.	Function	Setting	Description
1-1	Power ON notify setting	OFF	Enabled
1-2	Input buffer	OFF	4KB
1-3	Busy condition	ON	Buffer full
1-4	Receiving error character	OFF	Character?
1-5	CR mode	OFF	Disabled
1-7	DSR signal (when serial interface is used)	OFF	DSR
1-8	INIT signal (when serial interface is used)	OFF	-
2-2	Auto cutter operation	ON	Enabled
3-1	Auto cutter restore	OFF	L/F enabled
3-3	Parallel 31 Pin (when USB and parallel IF are used)	OFF	Reset
3-7	CBM1000-compatible mode	OFF	Non-compatible
3-8	Cover opened while printing	OFF	Auto restore
4-8	Full cut command	OFF	Full cut

6.4 CT-S310 Series

DIP Switch Setting

DSW No.	Function	Setting	Description
8	INIT (when serial interface is used)	OFF	Disabled

Memory Switch Setting

MSW No.	Function	Setting	Description
1-1	Power ON notify setting	OFF	Enabled
1-2	Input buffer	OFF	4KB
1-3	Busy condition	ON	Buffer full
1-4	Receiving error character	OFF	Character?
1-5	CR mode	OFF	Disabled
1-7	DSR signal (when serial interface is used)	OFF	DSR
1-8	INIT signal (when serial interface is used)	OFF	-
2-2	Auto cutter operation	ON	Enabled
3-1	Auto cutter restore	OFF	L/F enabled
3-3	Parallel 31 Pin (when USB and parallel IF are used)	OFF	Reset
3-7	CBM1000-compatible mode	OFF	Non-compatible
3-8	Cover opened while printing	OFF	Auto restore
4-8	Full cut command	OFF	Full cut
9-1	Code page	Katakana	-
9-2	Foreign language characters	Japan	-
9-3	Kanji	Enabled	-
9-4	JIS/Shift-JIS	Shift-JIS	-

6.5 CT-S2000 Series

DIP Switch Setting

DSW No.	Function	Setting	Description
8	INIT (when serial interface is used)	OFF	Disabled

Memory Switch Setting

MSW No.	Function	Setting	Description
1-1	Power ON notify setting	OFF	Enabled
1-2	Input buffer	OFF	4KB
1-3	Busy condition	ON	Buffer full
1-4	Receiving error character	OFF	Character?
1-5	CR mode	OFF	Disabled
1-7	Select DSR signal (when serial interface is used)	OFF	DSR
1-8	Select INIT signal (when serial interface is used)	OFF	-
2-2	Auto cutter operation	ON	Enabled
3-1	Auto cutter restore	OFF	L/F enabled
3-3	Parallel 31Pin (when USB and parallel IF are used)	OFF	Reset
3-7	CBM1000-compatible mode	ON	Compatible
3-8	Cover opened while printing	OFF	Auto restore
4-8	Forced partial	OFF	Disabled
5-2	Vertical basic calculation pitch	OFF	360 dots
7-6	DMA control	Enabled	-
9-1	Code page	Katakana	-
9-2	Foreign language characters	Japan	-
9-3	Kanji	Enabled	-
9-4	JIS/Shift-JIS	Shift-JIS	-
10-3	ACK output timing (when USB and parallel IF are used)	Before BUSY	-

6.6 CT-601/651/S801/851 Series

DIP Switch Setting

DSW No.	Function	Setting	Description
8	INIT (when serial interface is used)	OFF	Disabled

Memory Switch Setting

MSW No.	Function	Setting	Description
1-1	Power ON notify setting	OFF	Enabled
1-2	Input buffer	OFF	4KB
1-3	Busy condition	ON	Buffer full
1-4	Receiving error character	OFF	Character?
1-5	CR mode	OFF	Disabled
1-7	Select DSR signal (when serial interface is used)	OFF	DSR
1-8	Select INIT signal (when serial interface is used)	OFF	-
2-2	Auto cutter operation	ON	Enabled
3-1	Auto cutter restore	OFF	L/F enabled
3-3	Parallel 31Pin (when USB and parallel IF are used)	OFF	Reset
3-7	CBM1000-compatible mode	ON	Compatible
3-8	Cover opened while printing	OFF	Auto restore
4-8	Forced partial	OFF	Disabled
5-2	Vertical basic calculation pitch	OFF	360 dots
6-1	Act. For Driver	ON	Valid
7-6	DMA control	Enabled	-
9-1	Code page	Katakana	-
9-2	Foreign language characters	Japan	-
9-3	Kanji	Enabled	-
9-4	JIS/Shift-JIS	Shift-JIS	-
10-3	ACK output timing (when USB and parallel IF are used)	Before BUSY	-

6.7 CT-S4000 Series

DIP Switch Setting

DSW No.	Function	Setting	Description
8	INIT (when serial interface is used)	OFF	Disabled

Memory Switch Setting

MSW No.	Function	Setting	Description
1-1	Power ON notify setting	OFF	Enabled
1-2	Input buffer	OFF	4KB
1-3	Busy condition	ON	Buffer full
1-4	Receiving error character	OFF	Character?
1-5	CR mode	OFF	Disabled
1-7	Select DSR signal (when serial interface is used)	OFF	DSR
1-8	Select INIT signal (when serial interface is used)	OFF	-
2-2	Auto cutter operation	ON	Enabled
3-1	Auto cutter restore	OFF	L/F enabled
3-3	Parallel 31Pin (when USB and parallel IF are used)	OFF	Reset
3-7	CBM1000-compatible mode	ON	Compatible
3-8	Cover opened while printing	OFF	Auto restore
4-8	Forced partial	OFF	Disabled
5-2	Vertical basic calculation pitch	OFF	360 dots
5-5	Power OFF notify	Disabled	-
7-6	DMA control	Enabled	-
9-1	Code page	Katakana	-
9-2	Foreign language characters	Japan	-
9-3	Kanji	Enabled	-
9-4	JIS/Shift-JIS	Shift-JIS	-
10-3	ACK output timing (when USB and parallel IF are used)	Before BUSY	-

6.8 CD-S500 Series

DIP Switch Setting

DSW No.	Function	Setting	Description
8	INIT (when serial interface is used)	OFF	Disabled

Memory Switch Setting

MSW No.	Function	Setting	Description
SoftCtrl-1	Command Type	EPSON	-
SoftCtrl-5	Paper End (when USB and parallel IF are used)	DIS	At paper end Only Busy signal is output.
SoftCtrl-6	Paper Near-End (when USB and parallel IF are used)	DIS	At paper near-end Signal not output
SoftCtrl-8	Print Direct (Specifies print direction)	BI-DIR	Print from right or left end nearer from the print stop position.
SoftCtrl-9	Auto LF	OFF	-
SoftCtrl-11	Buffer Size	4Kbyte	-
SoftCtrl-12	Init Signal	ENB	Initialize signal enabled
Mechanical-2	Auto-Cutter	FREE	-
Mechanical-3	Color Ribbon	ON	Command switching

